



PN 10/16
DN 40...300



Product Features

- Resilient seated to EN 1171 (with 3352 - 4A)
- Screwless, pressure-sealed, body bonnet connection
- Face to face length to EN 558-1, basic series 14 and 15 (DIN 3202, F4 and F5)
- Low torque due to plastic sliding caps on the wedge
- DVGW tested and registered
- Elastomere approved in accordance with W 270 (Water)
- Final Inspection Test to EN 12266 water and gas (DIN 3230 part 4 water - DIN part 5 PG 1 or PG3 gas)

Materials

- Body, bonnet and wedge of ductile cast iron EN - JS 1030 (GGG-40)
- Stem of stainless steel with 13% chromium
- Wedge fully rubber lined with EPDM for water
- Wedge fully rubber lined with NBR for gas

Corrosion Protection

- inside and outside epoxy coated - in acc. with GSK guidelines



Accessories

- T-key
- Spindle extensions
- Surface box, plastic
- Surface box, plastic, adjustable.
- Supporting plate, plastic
- Surface box, cast iron
- SERIO-N position indicator

Field of Application

- Max. operating temperature: 50°C

Alternatives

- Inside true enamel, outside epoxy coated

For information about installation, commissioning, operating and maintenance we kindly refer to our **“Installation and Operating Instructions - Valves”**.

Field of use

Water

Final Inspection Tests in accordance with EN 12266

DN mm	PN	Max. operating pressure bar	Max. operating temperature for neutral liquids °C	Test pressure with water	
				in body bar	in seat bar
40...300	16	16	50	24	18

Field of use

Gas lines in acc. with DIN 2470 Part 1

Final Inspection Tests in accordance with EN 12266

DN mm	PN	Max. operating pressure bar	Max. operating temperature for gases in acc. with DVGW G 260 °C	Test pressure	Test pressure	Test pressure
				in body with air	in body with water	in seat with air
40...300	16	16	50	0.5	24	0.5

Field of use

Gas lines in acc. with DIN 30690

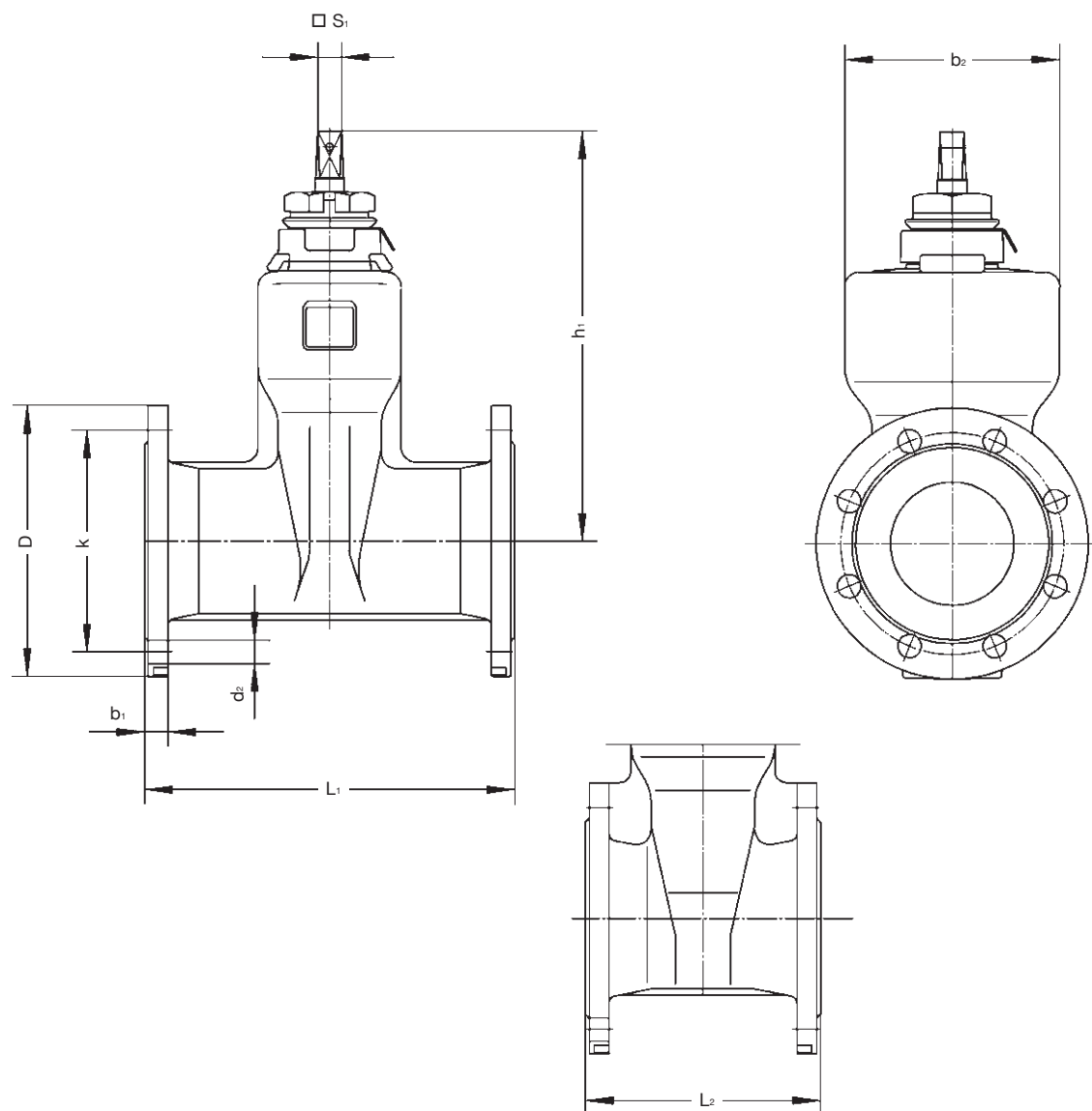
Final Inspection Tests in accordance with EN 12266

DN mm	PN	Max. operating pressure bar	Max. operating temperature for gases in acc. with DVGW G 260 °C	Test pressure	Test pressure	Test pressure	Test pressure
				in body with air	in body with water	in body with air	in seat with air
40...300	16	16	50	0.5	24	17.6	0.5 and 17.6

We reserve the right to make technical changes and use similar or higher-quality materials. Drawings are non-binding



Dimensions / weights



Dimensions in mm		DN	40	50	65	80	100	125	150	200	250	300 ¹⁾
Construction dimensions	h ₁ approx.		245	245	280	280	334	379	417	523	633	713
	b ₂		125	125	160	160	174	220	246	320	396	471
	□s ₁		14	14	17	17	19	19	19	24	27	27
Construction length	Basic series 15 L ₁		240	250	270	280	300	325	350	400	450	500
	in acc EN 558-1 Basic series 14 L ₂		140	150	170	180	190	200	210	230	250	270
Flange dimensions in accordance EN 1092-2 PN 16 (GGG-...)	D		150	165	185	200	220	250	285	340	400	455
	k		110	125	145	160	180	210	240	295	355	410
	No. of holes		4	4	4	8	8	8	8	12	12	12
	d ₂		19	19	19	19	19	19	19	23	23	28
	b ₁		19	19	19	19	19	19	19	20	22	24.5
Flange bore-holes PN 10	k		PN 10 and PN 16 are identical						295	350	400	
	No. of holes								8	12	12	
	d ₂								23	23	23	
Turns/stroke		11	13.5	16	20	20	25	30	34	43	51	
Net weight	Construction length L ₁	kg approx.	10.5	11.5	16.5	18	24.5	32.5	44	76	126	174.5
	Volume req.	m ³ approx.	0.015	0.015	0.020	0.025	0.035	0.050	0.070	0.110	0.185	0.260
Net weight	Construction length L ₂	kg approx.	10	10.5	15.5	17	22.5	31.5	40.5	68	109	155.5
	Volume req.	m ³ approx.	0.010	0.010	0.015	0.015	0.020	0.030	0.040	0.060	0.100	0.140

We reserve the right to make technical changes and use similar or higher-quality materials. Drawings are non-binding